

## Water One® WX Services for Wastewater Recycling

### SMART. RELIABLE. SUSTAINABLE.

Evoqua's Water One® WX Service is a digitally enabled wastewater recovery solution that provides reliable water quality, streamlined system operation and simplified cost control. This smart solution features 24/7 remote monitoring of your wastewater ion exchange (WWIX) system with predictive analytics and proactive service to ensure recovered water quality always meets your specifications.

The heart of the Water One WX service is an advanced monitoring, control and communications panel that is connected to your WWIX system. Tank performance is monitored 24/7 via a cellular connection and Evoqua's Link2Site® remote monitoring technology, which sends alerts for leaks, tank effluent quality, flow restrictions and tank exchanges. Evoqua's AQUA pro service team quickly addresses alerts or schedules tank exchanges. The result is reliable recovered water for your process, giving you more time to focus on your core business.

Evoqua's Water One WX service eliminates capital costs and unexpected service fees, giving you simplified cost control with real-time visibility and full asset utilization for maximum value from your investment

The Water One WX service also provides data-enabled insights to proactively identify and resolve water quality issues before they impact production. This accelerates troubleshooting root cause analysis and keeps your facility operating at top performance. In addition, Evoqua can provide automated data reports on water use, water quality and system performance.

### WATER ONE WX SERVICE APPLICATIONS

The Water One WX service is intended for non-hazardous, lower-TDS process water recycle treatment applications. Some examples include, but are not limited to:

- Aerospace manufacturing (anodizing rinses)
- Printed circuit board manufacturing and populating (circuit board washing rinses)
- General manufacturing (cleaning rinses)



### FEATURES

- 24/7/365 remote monitoring of WWIX system
- Predictive analytics to anticipate problems and optimize efficiency
- Automated tank exchanges
- System alerts for quality excursions, leaks, and filter obstructions
- Proactive response from Evoqua AQUA pro service professionals
- Data reports on water use, quality, and system performance

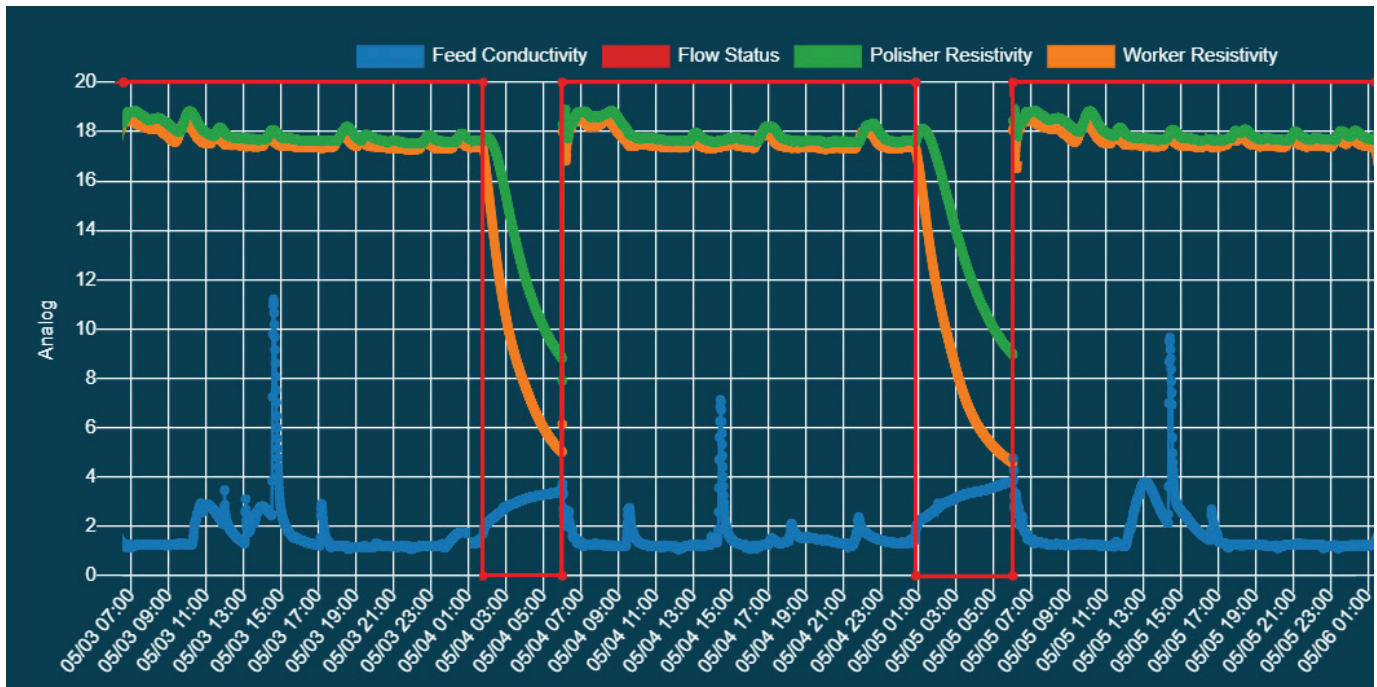
### BENEFITS

- Reliable quality and quantity of recovered water
- Improve production uptime
- Reduce water footprint
- Eliminate discharge
- Meet environmental compliance and sustainability goals
- Simplified cost control
- Full asset utilization
- Flexibility to meet new production demands

# Water One® Services Web Portal

Evoqua monitors your WWIX system 24/7/365 and will proactively alert you to status changes and tank exchange needs. Customers also have the option for access to a secure website portal to view their WWIX

system status, water use and quality data. Evoqua can set the type of notifications you would like to receive and can make adjustments at any time.



The data shows a brief spike in feedwater conductivity every day between 2:30 PM and 3:00 PM. This indicates a contamination issue and provides an opportunity to help the customer identify a potential process improvement.

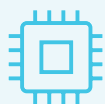
## THE EVOQUA DIGITAL ADVANTAGE

Evoqua improves upon traditional approaches to water system management by leveraging decades of experience in water system design, an unmatched local service network and digital remote monitoring technology to deliver the quality and quantity of water you need—when you need it. You can count on us to

be there when needed with customer support centers nationwide and 24/7 automated dispatch service. Our professional service technicians, engineers and customer service representatives are highly trained and experienced to help with all your water system needs.



Water Expertise



Proven Technology



Data Intelligence



Proactive Service



210 Sixth Avenue, Suite 3300, Pittsburgh, PA 15222

+1-724-772-0044 [evoqua.com](http://evoqua.com)

Link2Site, Water One, Evoqua and the Evoqua logo are trademarks of Evoqua Water Technologies LLC, its subsidiaries or affiliates, in some counties.

All information presented herein is believed reliable and in accordance with accepted engineering practices. Evoqua makes no warranties as to the completeness of this information. Users are responsible for evaluating individual product suitability for specific applications. Evoqua assumes no liability whatsoever for any special, indirect or consequential damages arising from the sale, resale, or misuse of its products.

© 2023 Evoqua Water Technologies LLC

Subject to change without notice

ES-WOWX-DS-0723